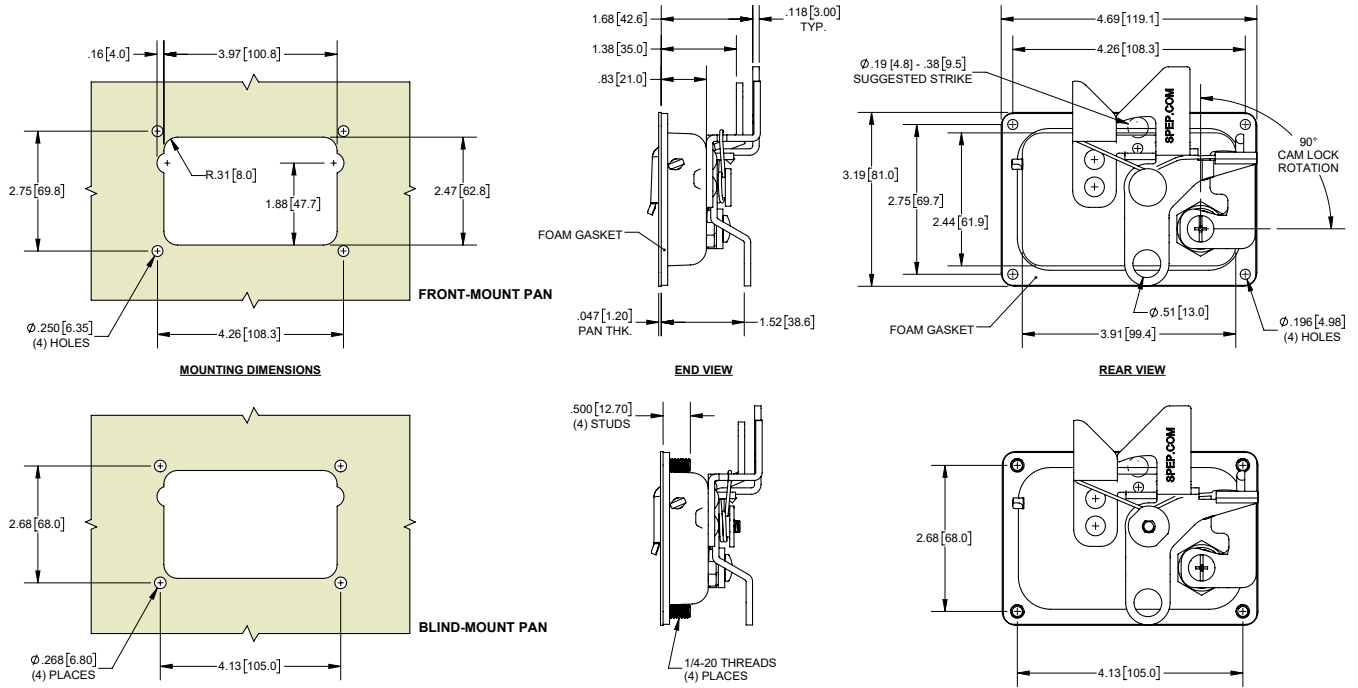


Locking Paddle Handles



Part Number	Pan Material/Finish	Handle Material/Finish	Key Code	Mounting
459-T001	steel / black matte powder coated	steel / polished chrome plated	T001	holes
459BK-T001	steel / black matte powder coated	steel / black matte powder coated	T001	holes
NEW 459BK-T545	steel / black matte powder coated	steel / black matte powder coated	T545	threaded studs
459CH-T001	steel / polished chrome plated	steel / polished chrome plated	T001	holes

- ▶ includes 2 ringed keys
- ▶ includes foam gasket
- ▶ slam override function for automatic locking feature



NEW Rod Guide with Set Screw

Part Number	Material	Finish
458-01	die cast zinc	blue zinc plated

- ▶ includes steel set screw
- ▶ used on part no. **459-T001**, **459BK-T001**, **459CH-T001** and **459BK-T545**

