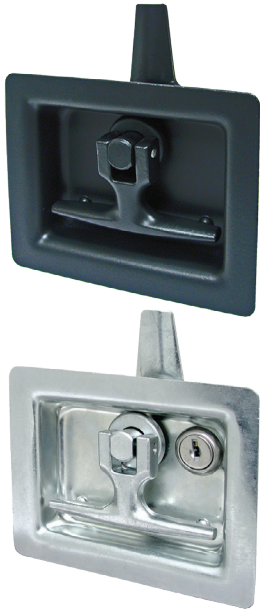
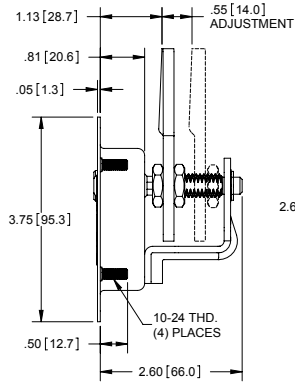


Single Point Folding T-Handles

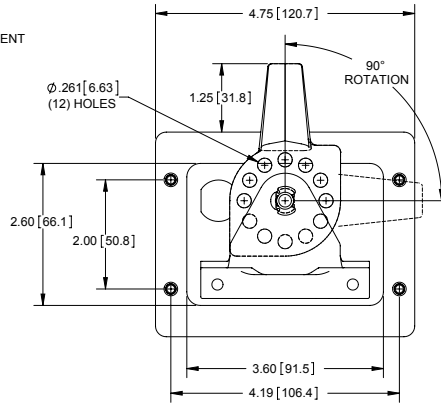


Part Number	Key Code	Pan Thickness	Finish
486RH-01	non-locking	18 gauge	matte black powder coated
486LH-01	non-locking		
486RH-751	CH751	18 gauge	zinc plated
486LH-751	CH751		

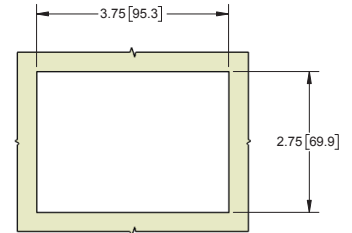
- ▶ material: steel
- ▶ locking part numbers include cam lock with (2) ringed keys
- ▶ cam has multiple holes for optional multi-point installation
- ▶ features adjustable cam
- ▶ see page 63 for rods



RIGHT SIDE VIEW
RIGHT HAND SHOWN

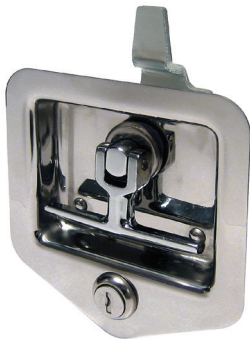


REAR VIEW
RIGHT HAND SHOWN



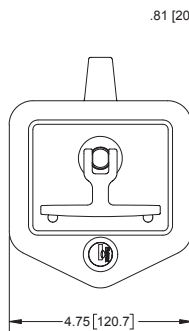
MOUNTING DIMENSIONS

Single Point Locking T-Handle with Offset Cam

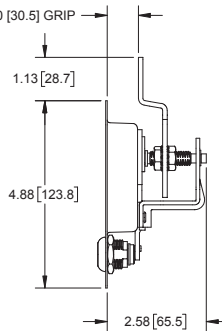


Part Number	Key Code	Equivalent Key Code	Pan Material/ Finish	Holes	Pan Thickness	Handle Material
484-502-01	EM502	CH502	430SS pan only / polished	no	18 gauge	die cast zinc

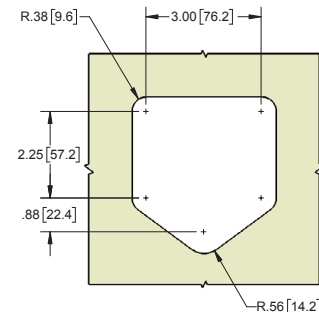
- ▶ features adjustable cam



FRONT VIEW



RIGHT SIDE VIEW



MOUNTING DIMENSIONS

replacement cam locks available. see table below.

Replacement Cam Locks



Part Number	Key Code	Equivalent	Part Number	Key Code	Part Number	Key Code
LCEM501	EM501	CH501	LCDB-01	01	LCDB-06	06
LCEM502	EM502	CH502	LCDB-02	02	LCDB-07	07
LCEM545	EM545	CH545	LCDB-03	03	LCDB-08	08
LCEM751	EM751	CH751	LCDB-04	04	LCDB-09	09
			LCDB-05	05	LCDB-10	10

▶ double bitted

▶ double bitted

Folding T-Handle Gasket

Part Number	Description
480G	folding T-handle gasket

- ▶ for use with part no. 484-502-01 and T-handles on page 71

