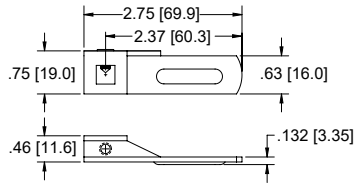
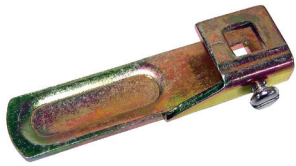


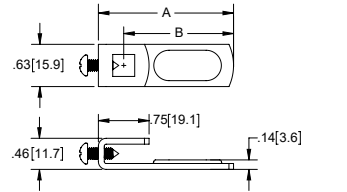
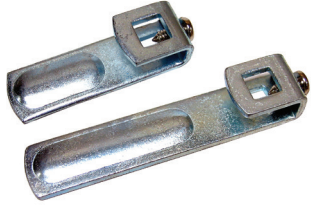
Single Point Cam



Part Number	Material	Finish
<b>C3</b>	steel	yellow zinc plated

▶ for .313 [7.94] sq. shaft

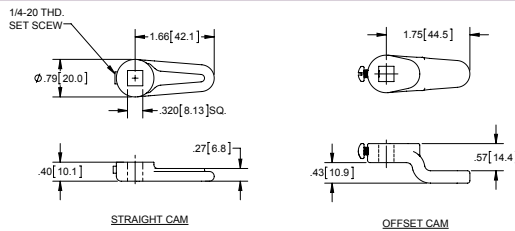
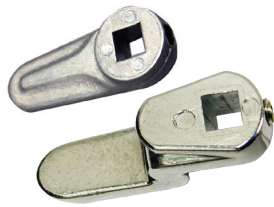
Single Point Cams



Part Number	Material	Finish	A	B
<b>C14</b>	steel	zinc plated	2.00 [50.8]	1.63 [41.4]
<b>C16</b>	steel	zinc plated	3.00 [76.2]	2.63 [66.8]

▶ for .313 [7.94] sq. shaft

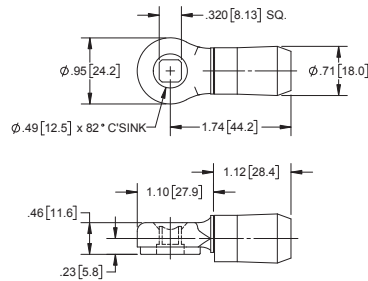
Single Point Cams



Part Number	Style	Material	Finish
<b>C15</b>	straight	die cast zinc	mill
<b>C15-01</b>	offset	die cast zinc	zinc plated

▶ for .313 [7.94] sq. shaft

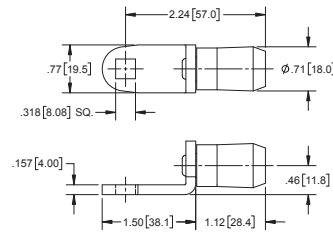
Roller Cam



Part Number	Material	Finish
<b>697</b>	die cast zinc/plastic	zinc/black

▶ for .313 [7.94] sq. shaft

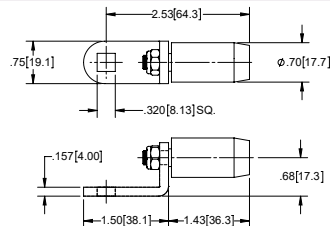
Roller Cam



Part Number	Material	Finish
<b>697-01</b>	304SS/plastic	passivated/black

▶ for .313 [7.94] sq. shaft

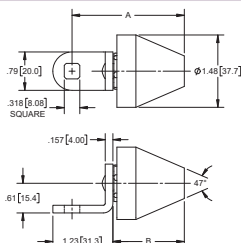
Roller Cam



Part Number	Material	Finish
<b>698</b>	steel/plastic	zinc/black

▶ for .313 [7.94] sq. shaft

Roller Cams



Part No.	Material	Finish	Description	A	B
<b>696</b>	steel/ plastic	zinc/ black	long roller	1.38 [35.1]	1.46 [37.2]
<b>696-01</b>	steel/ plastic	zinc/ black	short roller	.87 [22.0]	.96 [24.4]

▶ for .313 [7.94] sq. shaft