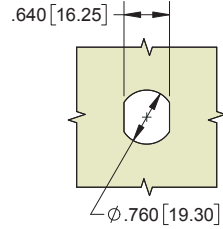
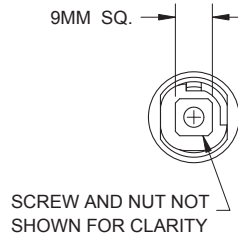
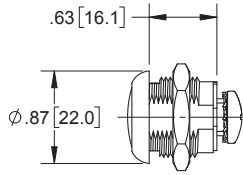
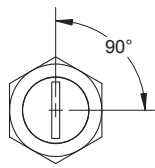


Slotted Cam Latch



Base Part Number	Length	Finish	Body Mounting	Rotation	Cam Style	Cam Fastener	Stock
K09ICP---001	5/8 [16]	chrome	hex nut	90° CW	any, see pages 370-371	screw-on	stock

- ▶ **NOTE:** cam is not included
- ▶ contact sales for custom options
- ▶ material: die cast zinc



MOUNTING DIMENSIONS

Bellcore Style Cam Latch



Hex Tool Key

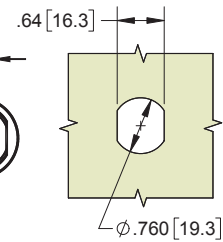
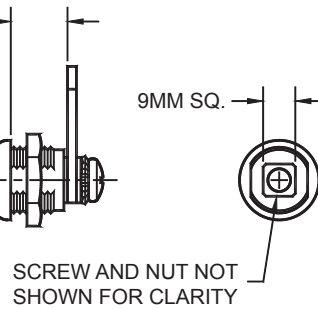
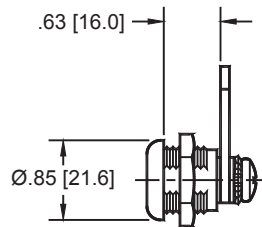
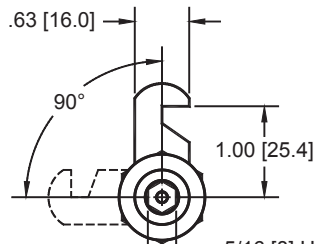


part number **392-K**

▶ sold separately

Base Part Number	Length L	Finish	Body Mounting	Rotation	Cam Style	Cam Fastener	Stock
K40ICP01	5/8 [16]	black electro-painted	hex nut	90°	for additional cam styles see pages 370-371	screw-on	stock

- ▶ material: die cast zinc
- ▶ hook cam included



MOUNTING DIMENSIONS

5/16 [8] HEX x
.13 [3.3] DEEP
WITH PIN ON
CENTER