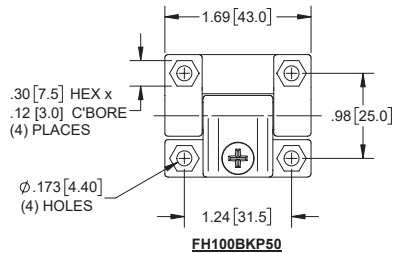


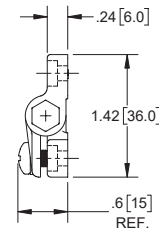
Plastic Adjustable Friction Hinges

Part Number	Material	Finish	Holes
FH100BKP50	plastic	matte black	hex
NEW FH100BKP55	plastic	matte black	round

- ▶ tornillo de ajuste: 304SS con acabado negro
- ▶ tuerca de ajuste: 304SS con acabado pasivado



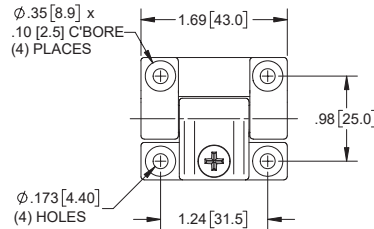
FH100BKP50



part number: FH100BKP50



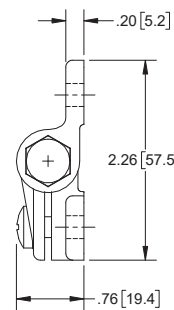
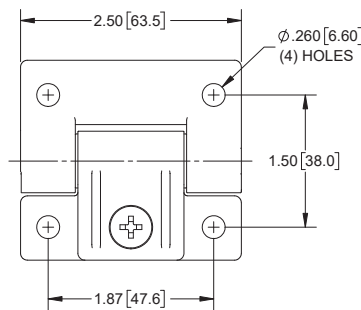
part number: FH100BKP55



FH100BKP55

Part Number	Material	Finish
FH200BKP50	plastic	matte black

- ▶ adjustment screw and nut: 304SS with mill finish



Large Constant Torque Hinges

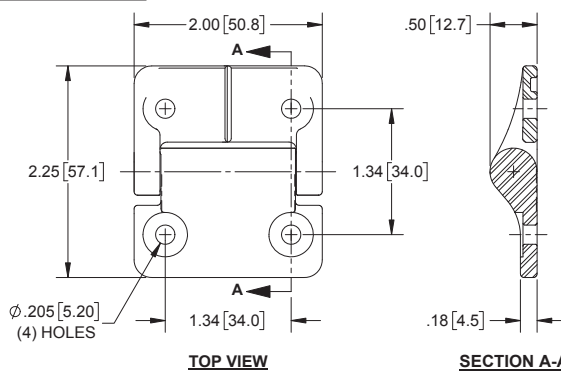
Features

- ▶ material: die cast zinc
- ▶ life cycle: 25,000 cycles within ±20% of torque specification
- ▶ mill finish parts are non-stock
- ▶ cannot apply finishes that require curing/baking on mill finish parts
- ▶ radial working load: 35 lbs.
- ▶ radial ultimate load: 675 lbs.
- ▶ axial working load: 35 lbs.
- ▶ axial ultimate load: 360 lbs.
- ▶ operating temperature range: -4°F - 150°F (-20°C - 65°C)



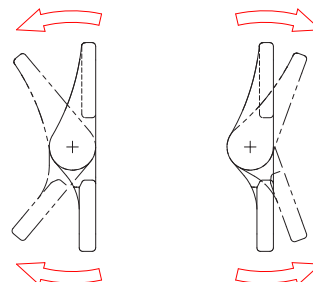
Symmetric Torque with Plain Holes

	Finish		Torque in - LBF[Nm]
	Mill	Black	
CT501	CT501BK	0.0 [0.0]	
CT502	CT502BK	8.0 [0.9]	
CT503	CT503BK	15.9 [1.8]	
CT504	CT504BK	20.4 [2.3]	
CT505	CT505BK	30.1 [3.4]	



Asymmetric Torque with Plain Holes

	Finish		Closing Torque in - LBF[Nm]	Opening Torque in - LBF[Nm]
	Mill	Black		
CT510	CT510BK	20.4 [2.3]	12.4 [1.4]	
CT520	CT520BK	30.1 [3.4]	17.7 [2.0]	
CT530	CT530BK	39.8 [4.5]	23.9 [2.7]	
CT540	CT540BK	12.4 [1.4]	20.4 [2.3]	
CT550	CT550BK	17.7 [2.0]	30.1 [3.4]	
CT560	CT560BK	23.9 [2.7]	39.8 [4.5]	



CLOSING ROTATION

OPENING ROTATION

no need for any adjustment