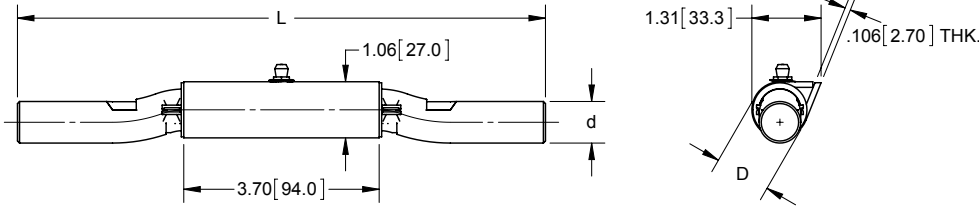


Steel Barrel Hinge with Steel Body and Grease Fitting



Part Number	Length (L)	Body Dia. (D)	Pin Dia. (d)
<b>W427</b>	10.00 [254.0]	1.063 [27.00]	.787 [20.00]

- ▶ the sheet metal tear-drop housing is specially shaped for easier welding
- ▶ 1/4" grease fitting

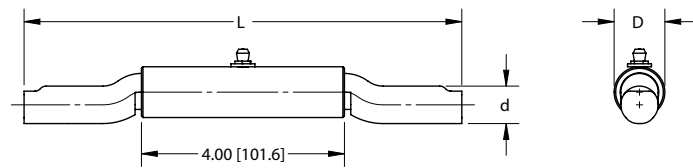


Steel Barrel Hinge with Steel Body and Grease Fitting



Part Number	Length (L)	Body Dia. (D)	Pin Dia. (d)
<b>W429</b>	8.63 [219.2]	1.000 [25.40]	.738 [18.75]

- ▶ 1/4" grease fitting

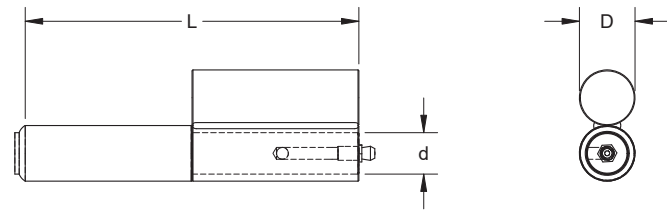


Steel Barrel Hinge with Grease Fitting and Welded Bar

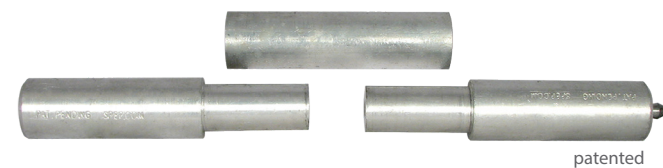


Part Number	Length (L)	Body Dia. (D)	Pin Dia. (d)
<b>W422</b>	6.00 [152.4]	1.00 [25.4]	.75 [19.1]

- ▶ 1/4" grease fitting



Three Piece Barrel Hinge **PAT.**



Part Number	Length (L)	Body Dia. (D)	Pin Dia. (d)	Material
<b>W412-A01</b>	10.00 [254.0]	.969 [24.61]	.75 [19.1]	aluminum

- ▶ 1/4" grease fitting

