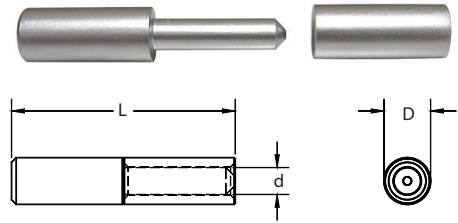


Stainless Steel Barrel Hinge with Stainless Steel Pin

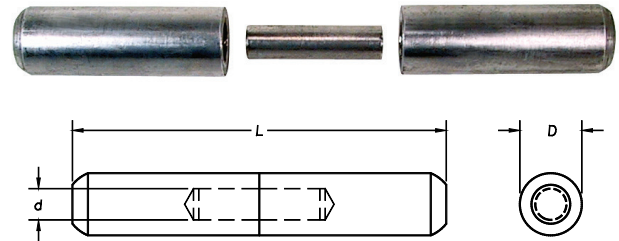
Part Number	Length (L)	Body Dia. (D)	Pin Dia. (d)
W420	3.00 [76.2]	.625 [15.9]	.36 [9.1]



Steel Barrel Hinge with Steel Pin

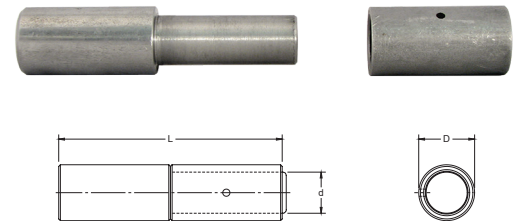
Part Number	Length (L)	Body Dia. (D)	Pin Dia. (d)
W405	6.00 [152.4]	1.000 [25.4]	.50 [12.7]

▶ pin not fixed



Steel Barrel Hinge with Steel Pin

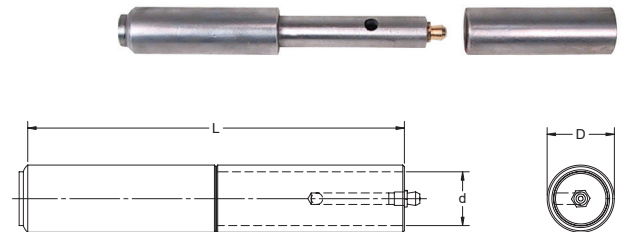
Part Number	Length (L)	Body Dia. (D)	Pin Dia. (d)
W426	4.00 [101.6]	1.00 [25.4]	.74 [18.8]



Steel Barrel Hinge with Steel Pin and Grease Fitting

Part Number	Length (L)	Body Dia. (D)	Pin Dia. (d)	Grease Fitting Material
W400	4.50 [114.3]	.750 [19.1]	.50 [12.7]	brass
W401	6.50 [165.1]	.750 [19.1]	.50 [12.7]	brass
W425	7.00 [177.8]	1.250 [31.8]	1.00 [25.4]	brass
W430	4.00 [101.6]	1.00 [25.4]	.75 [19.1]	steel

▶ additional 1/4" grease fittings may be purchased separately



Steel Barrel Hinge with Steel Pin and Accessories

Part Number	Length (L)	Body Dia. (D)	Pin Dia. (d)
W400-02	2.88 [73.2]	.750 [19.1]	.50 [12.7]

▶ 1/4" grease fitting
▶ grease fitting and washer hold hinge together
▶ additional 1/4" grease fittings may be purchased separately

