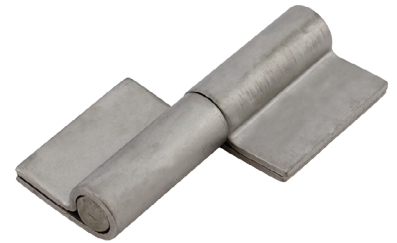
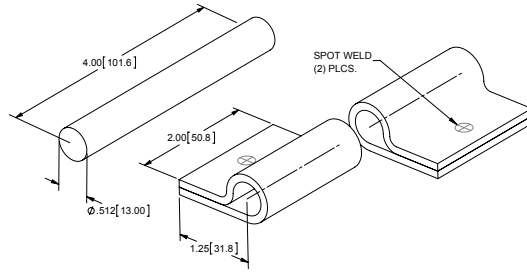


### Double Wrap Flag Joint Hinges

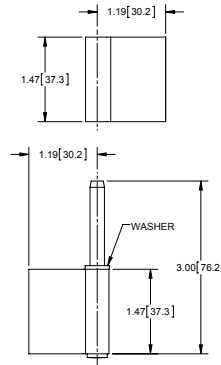
Part Number	Material	Finish
<b>H1039</b>	.120 [3.05] steel	mill
<b>H1039ZN</b>	.120 [3.05] steel	zinc plated
<b>H1039SS</b>	304SS	passivated



### Stainless Steel Flag Joint Hinge

Part Number	Material	Finish
<b>FJ71130L01</b>	.079 [20.07] 304SS	tumbled

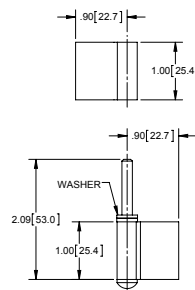
- ▶ pin: Ø.250 [6.35] cold headed pin
- ▶ both leaves half swaged
- ▶ washer welded to knuckle



### Stainless Steel Flag Joint Hinge

Part Number	Material	Finish
<b>FJ61720SS</b>	.079 [20.07] 304SS	tumbled

- ▶ pin: Ø.181 [4.60] cold headed pin
- ▶ both leaves half swaged
- ▶ includes stainless steel and nylon washer for needed application



### Cold Rolled Steel Loose Joint Hinges

Part Number	Leaf Side	Hole Size	Pin Length	Gauge	Leaf Width	Length	Pin Dia.
<b>BH8150 ▲</b>	LH male	.161 [4.09]	.500 [12.70]				
<b>BH8150NH ▲</b>	LH male	no holes	.500 [12.70]				
<b>BH8152 ●</b>	LH male	.161 [4.09]	.625 [15.88]				
<b>BH8152NH ●</b>	LH male	no holes	.625 [15.88]				
<b>BH8154</b>	LH female	.161 [4.09]	n/a				
<b>BH8154NH</b>	LH female	no holes	n/a	.050 [1.27]	.719 [18.26]	1.500 [38.10]	.120 [3.05]
<b>BH8160</b>	RH female	.161 [4.09]	n/a				
<b>BH8160NH</b>	RH female	no holes	n/a				
<b>BH8162 ▲</b>	RH male	.161 [4.09]	.500 [12.70]				
<b>BH8162NH ▲</b>	RH male	no holes	.500 [12.70]				
<b>BH8164 ●</b>	RH male	.161 [4.09]	.625 [15.88]				
<b>BH8164NH ●</b>	RH male	no holes	.625 [15.88]				

- ▶ all part numbers are mill finish (call for finish availability)
- ▲ short pin
- long pin

