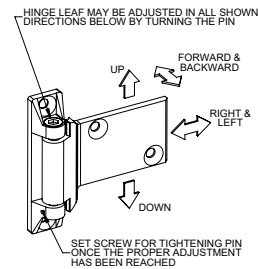
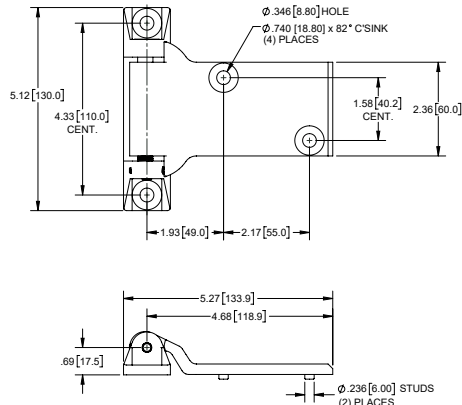
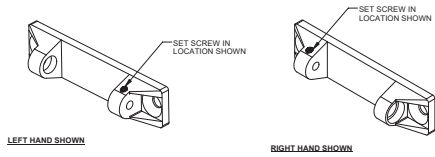


Die Cast Zinc Strap Hinges with Adjustable Offset

Part No.	Material	Description
H2258BK-LH	die cast zinc	left hand
H2258BK-RH	die cast zinc	right hand

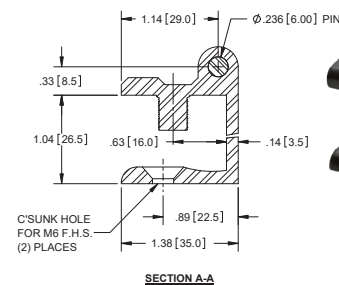
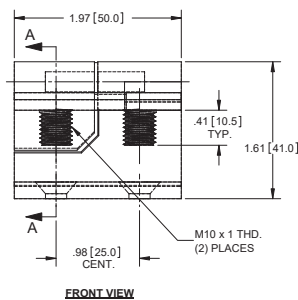
- ▶ finish: matte black
- ▶ stainless steel pin with passivated finish
- ▶ eccentric pin allows up/down & lateral in/out hinge adjustment
- ▶ includes set screw to lock pin in place after adjustment



Cast Lift-off Hinges with Threaded Studs

Part No.	Material	Finish	Description
H2070RH	die cast zinc	black powder coated	right hand
H2070LH	die cast zinc	black powder coated	left hand

- ▶ brass bushing
- ▶ steel, nickel plated pin
- ▶ left and right hand hinges are a mirror image of each other

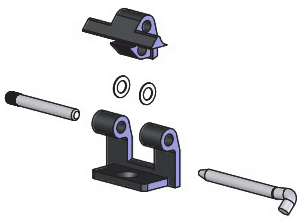


RH shown

Cast Take-apart Enclosure Hinges

Part No.	Material	Door	Dim. A
H2089	die cast zinc	1.5-2mm thick	5mm
H2089-01	die cast zinc	2.5-3.2mm thick	6mm

- ▶ finish: black powder coated leaves
- ▶ steel, zinc plated pin



EXPLODED VIEW

