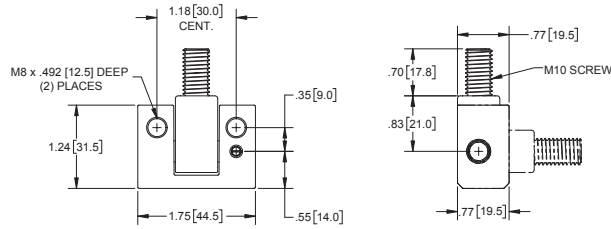
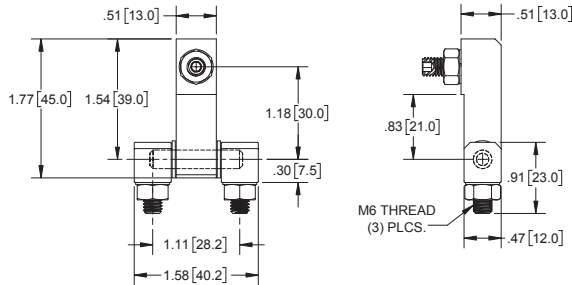


### Hinge Block



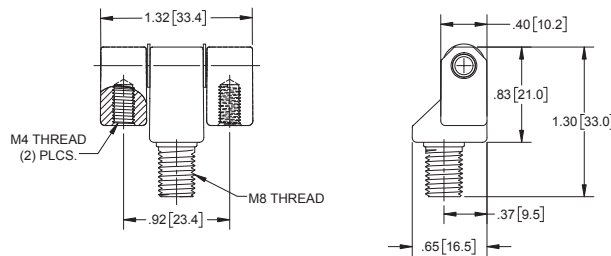
Part No.	Material	Finish
H2261CH	die cast zinc	chrome plated
▶ steel, nickel plated pin		

### Hinge Block



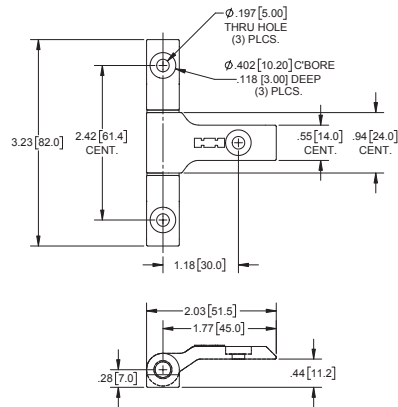
Part No.	Material	Finish
H2264	steel	zinc plated

### Hinge Block



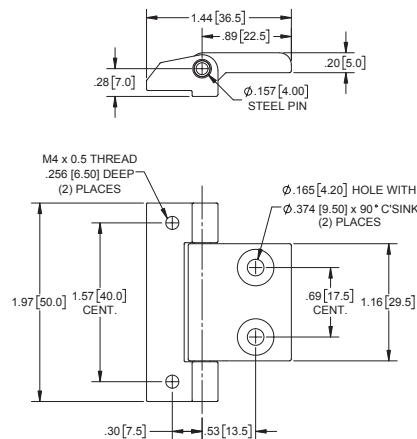
Part No.	Material	Finish
H2265BK	die cast zinc	black powder coated
▶ 180° rotation		
▶ steel, nickel plated pin		

### Die Cast Zinc Strap Hinge



Part No.	Material	Finish
H2249BK	die cast zinc	black powder coated
▶ steel, nickel plated pin		

### Die Cast Zinc Strap Hinge



Part No.	Material	Finish
H2248BK	die cast zinc	black powder coated
▶ steel, nickel plated pin		