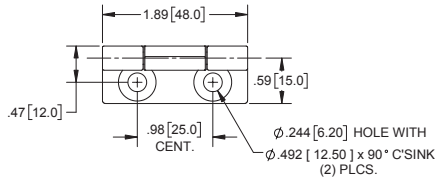
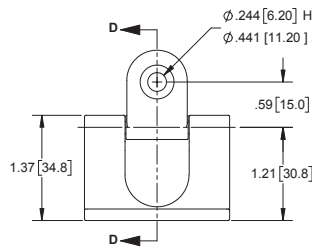


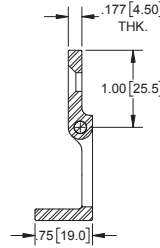
Die Cast Zinc Hinge



TOP VIEW



FRONT VIEW

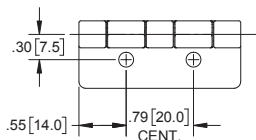


SECTION D-D

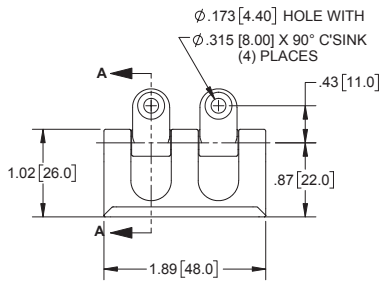
| Part No. | Material      | Finish              |
|----------|---------------|---------------------|
| H2251BK  | die cast zinc | black powder coated |

- ▶ steel, nickel plated pin
- ▶ mounting screw size M6 or #10, 12 F.H.S.

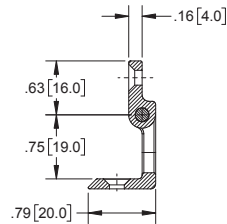
Die Cast Zinc Hinge



TOP VIEW



FRONT VIEW

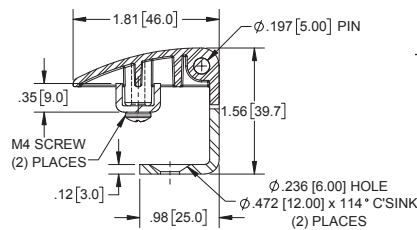
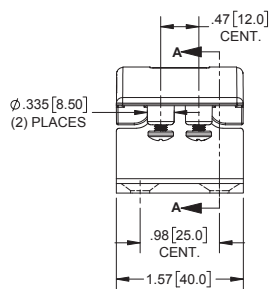


SECTION A-A

| Part No. | Material      | Finish                 |
|----------|---------------|------------------------|
| H2254CH  | die cast zinc | textured chrome plated |

- ▶ steel, nickel plated pin
- ▶ mounting screw size M4 or #8 F.H.S.

Butt Hinge with Mounting Bracket

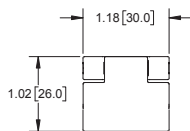


SECTION A-A

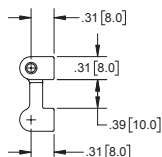
| Part No. | Material      | Finish              |
|----------|---------------|---------------------|
| H2270BK  | die cast zinc | black powder coated |

- ▶ steel, zinc plated pin, mounting bracket, and mounting screw
- ▶ mounting screw size M5 or #10 F.H.S.

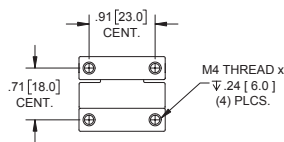
Die Cast Zinc Hinge



FRONT VIEW



RIGHT SIDE VIEW



REAR VIEW

| Part No. | Material      | Finish              |
|----------|---------------|---------------------|
| H2250BK  | die cast zinc | black powder coated |
| H2250CH  | die cast zinc | chrome plated       |

- ▶ steel, nickel plated pin
- ▶ mounting screw size M4