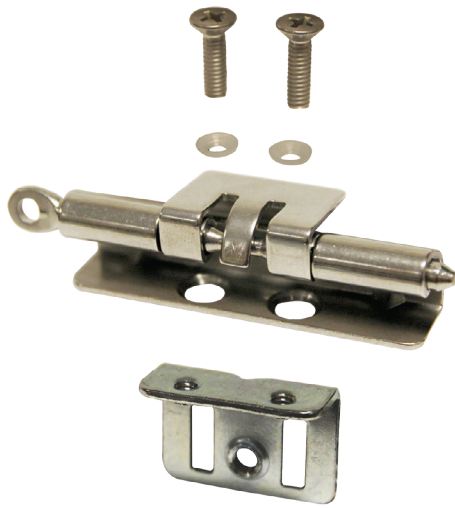


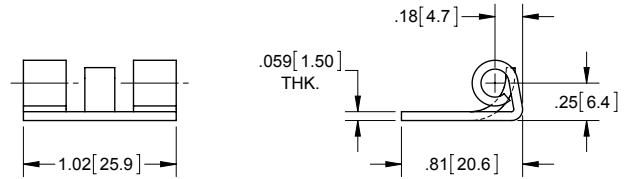
Electrical Box Hinge Assembly Kits - Quick Release Pin

NEMA

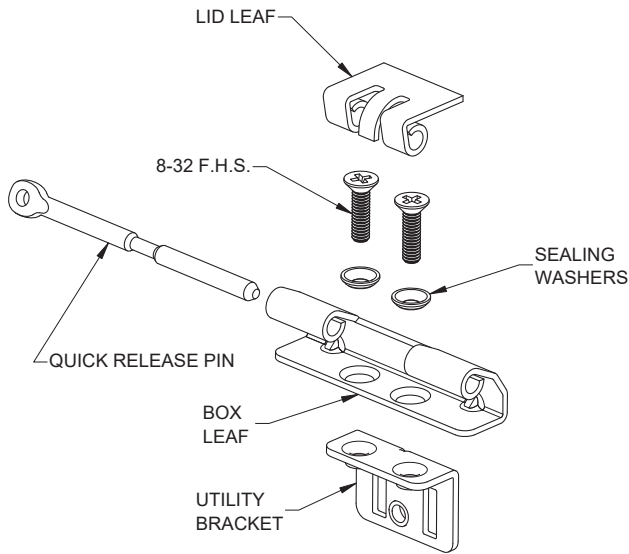


Kit Part Number	Component Part Number	Description	Material	Finish
J20885S	X127-03	quick release pin	304SS	mill
	X1235S	box leaf	304SS	mill
	J20735S	lid leaf	304SS	mill
	X1245S	8-32 FHS	18-8SS	mill
	J2074ZN	utility bracket	steel	zinc
	P1037	sealing washer	nylon	smooth

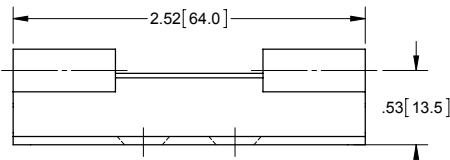
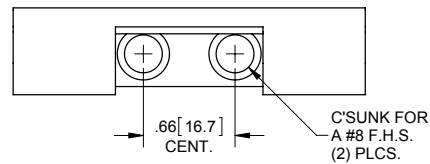
► for a proper seal between box leaf, electrical box and utility bracket, the through holes on the electrical box must be .234 [5.94] - .236 [6.00] diameter



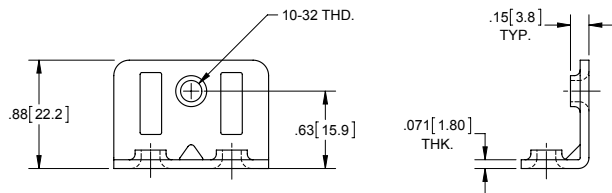
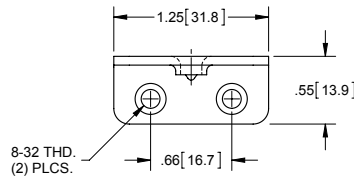
LID LEAF



EXPLODED VIEW



BOX LEAF



UTILITY BRACKET