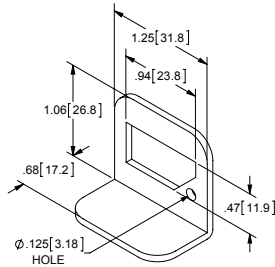
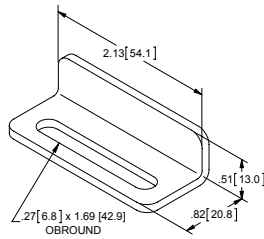


Padlock Hasp and Staple Set



Kit Part No. 1801 - Steel

Part Number	Qty.	Description
180	1	steel, tumbled, .102 [2.59] thick padlock hasp
181	1	steel, mill finish, .074 [1.88] thick padlock staple

Kit Part No. 1801SS - Stainless Steel

Part Number	Qty.	Description
180SS	1	304SS, tumbled, .102 [2.59] thick padlock hasp
18101SS	1	304SS, tumbled, .074 [1.88] thick padlock staple

Kit Part No. 1801SS-01 - 316SS

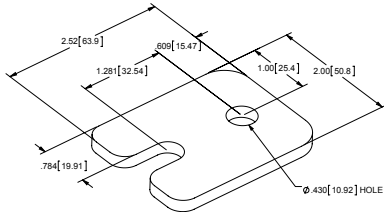
Part Number	Qty.	Description
180SS-01	1	316SS, tumbled, .102 [2.59] thick padlock hasp
18101SS-01	1	316SS, tumbled, .074 [1.88] thick padlock staple

Kit Part No. 1801A - Aluminum

Part Number	Qty.	Description
180A	1	aluminum, tumbled, .102 [2.59] thick padlock hasp
181A	1	aluminum, tumbled, .074 [1.88] thick padlock staple

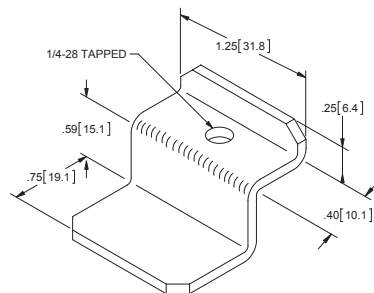
▶ kit parts can be purchased separately

Mounting Foot



Part Number	Material	Finish	Material Thickness
183	steel	mill	.189 [4.80]
18301SS	304SS	mill	.135 [3.43]
18301SS-01	316SS	mill	.118 [3.00]
183A	aluminum	mill	.197 [5.00]

NEMA Clamp Bracket



Part Number	Material	Finish	Thread	Material Thickness
187	steel	mill	1/4-28	.090
18701SS	304SS	mill	1/4-28	.090
18701SST	316SS	mill	1/4-28	.090