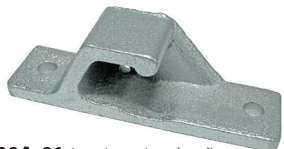


Bar Lock Accessories



1500A-01 (cast iron, zinc plated)



1500A (cast iron, zinc plated)

NEW 1500A-M (cast iron, mill)
1500A-10M (cast steel, mill & no mounting holes)

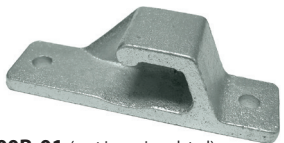


1500A-06M (cast iron, mill)

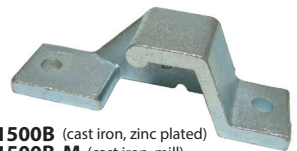


NEW

1500A-16M (cast steel, mill)



1500B-01 (cast iron, zinc plated)



1500B (cast iron, zinc plated)

NEW 1500B-M (cast iron, mill)
1500B-10M (cast steel, mill & no mounting holes)



1500B-06M (cast iron, mill)



NEW

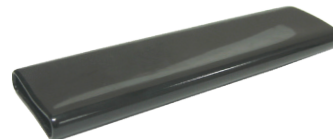
1500B-16M (cast steel, mill)



1500D (cast iron, zinc plated)
1500D-M (cast iron, mill)
1500D-M01* (cast steel, mill)
▶ *for schedule 80 3/4" pipe



1500C (cast iron, zinc plated)
1500C-M (cast iron, mill)
1500C-M01* (cast steel, mill)
▶ *for schedule 80 3/4" pipe



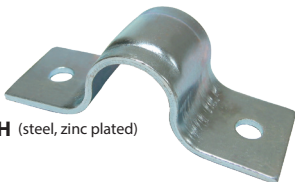
1500F (PVC, black)



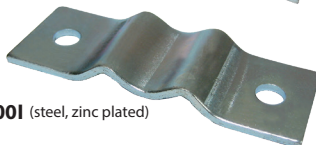
1500E (steel, zinc plated)
1500E-M (steel, mill)



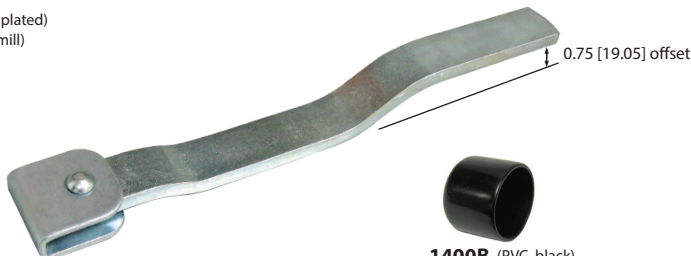
1600F (PVC, black)



1500H (steel, zinc plated)



1500I (steel, zinc plated)



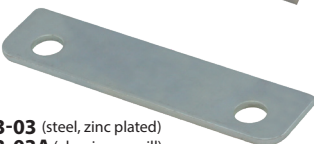
1600E (steel, zinc plated)



1400B (PVC, black)



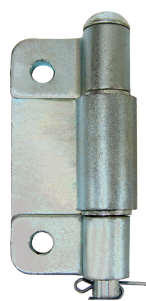
1500IP (plastic, gray)



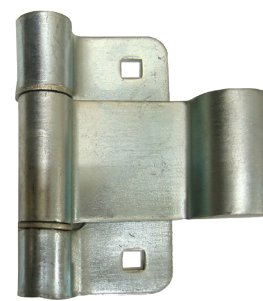
H3-03 (steel, zinc plated)
H3-03A (aluminum, mill)
H3-03SS (304SS, mill)



1400A (steel, zinc plated)



1400A-01 (steel, zinc plated)



1400C (steel, zinc plated)



1500G-01 (steel, zinc plated)



1600GSS01 (304SS, electropolished)



1500GSS (304SS, electropolished)



1600GSS (304SS, tumbled)



1600G (steel, zinc plated)
1600G-01M (steel, mill)

1500G (steel, zinc plated)
1500G-M (steel, mill)