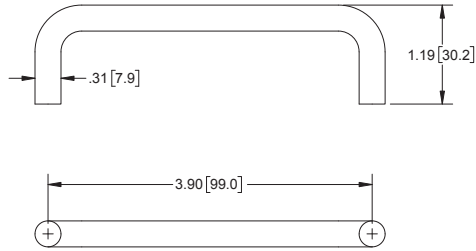


**Stainless Steel Wire Pull**

Part Number	CC	Material	Finish
<b>945</b>	3.90 [99.1]	304SS	mill

▶ this handle has **no** mounting holes



**Wire Pulls**

Part Number	CC	Material	Finish	Thread Size
<b>903BK</b>	1.18 [30.00]	aluminum	black anodized	8-32
<b>904BK</b>	2.52 [64.00]			
<b>905BK</b>	3.78 [96.00]			
<b>906BK</b>	5.04 [128.00]			
<b>903BK-01</b>	1.18 [30.00]	aluminum	black anodized	M4 X 0.7
<b>904BK-01</b>	2.52 [64.00]			
<b>905BK-01</b>	3.78 [96.00]			
<b>906BK-01</b>	5.04 [128.00]			
<b>903</b>	1.18 [30.00]	aluminum	clear anodized	8-32
<b>904</b>	2.52 [64.00]			
<b>905</b>	3.78 [96.00]			
<b>906</b>	5.04 [128.00]			
<b>903-01</b>	1.18 [30.00]	aluminum	clear anodized	M4 X 0.7
<b>904-01</b>	2.52 [64.00]			
<b>905-01</b>	3.78 [96.00]			
<b>906-01</b>	5.04 [128.00]			
<b>903CH</b>	1.18 [30.00]	steel	chrome plated	8-32
<b>904CH</b>	2.52 [64.00]			
<b>905CH</b>	3.78 [96.00]			
<b>906CH</b>	5.04 [128.00]			
<b>903CH-01</b>	1.18 [30.00]	steel	chrome plated	M4 X 0.7
<b>904CH-01</b>	2.52 [64.00]			
<b>905CH-01</b>	3.78 [96.00]			
<b>906CH-01</b>	5.04 [128.00]			
<b>903ZN</b>	1.18 [30.00]	steel	zinc plated	8-32
<b>904ZN</b>	2.52 [64.00]			
<b>905ZN</b>	3.78 [96.00]			
<b>906ZN</b>	5.04 [128.00]			
<b>903ZN-01</b>	1.18 [30.00]	steel	zinc plated	M4 X 0.7
<b>904ZN-01</b>	2.52 [64.00]			
<b>905ZN-01</b>	3.78 [96.00]			
<b>906ZN-01</b>	5.04 [128.00]			
<b>903SS</b>	1.18 [30.00]	304SS	passivated	8-32
<b>904SS</b>	2.52 [64.00]			
<b>905SS</b>	3.78 [96.00]			
<b>906SS</b>	5.04 [128.00]			
<b>903SS-01</b>	1.18 [30.00]	304SS	passivated	M4 X 0.7
<b>904SS-01</b>	2.52 [64.00]			
<b>905SS-01</b>	3.78 [96.00]			
<b>906SS-01</b>	5.04 [128.00]			

