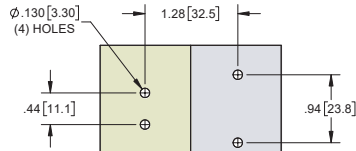
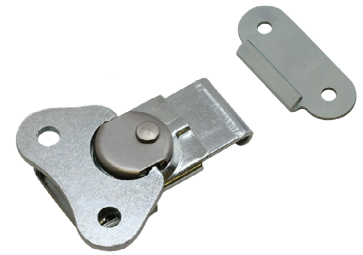
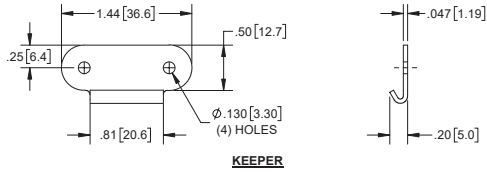
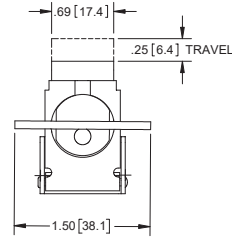


### Small Twist Latches

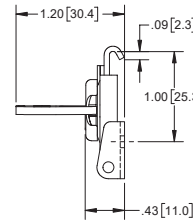
Part Number	Description	Material	Finish
209102	latch	steel	zinc plated
209103	keeper	steel	zinc plated
209102SS	latch	300 series stainless steel	tumbled
209103SS	keeper	304SS	tumbled



**MOUNTING DIMENSIONS**



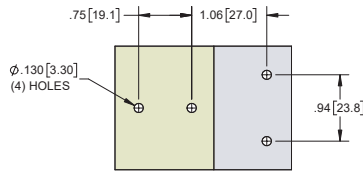
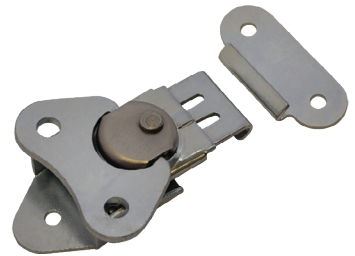
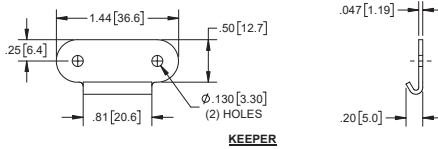
**LATCH**



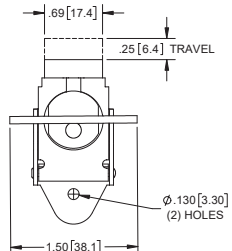
### Small Twist Latches with Tri-shaped Base

Part Number	Description	Material	Finish
2094	latch	steel	zinc plated
209103	keeper	steel	zinc plated
2094SS	latch	300 series stainless steel	tumbled
209103SS	keeper	304SS	tumbled
209402	polybagged	steel	zinc plated

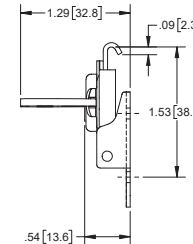
► polybagged part number contains one latch and one keeper per sealed bag



**MOUNTING DIMENSIONS**

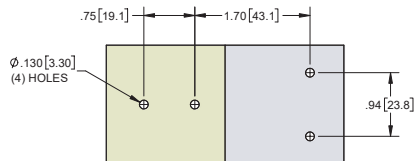
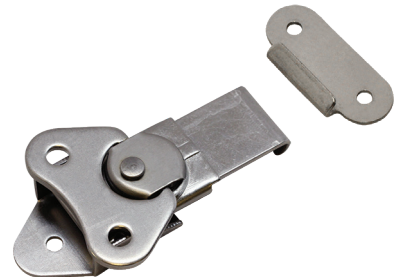
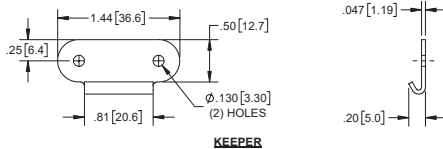


**LATCH**

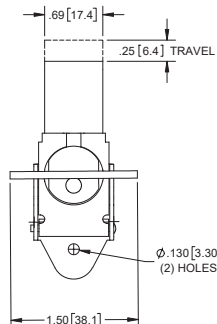


### Small Twist Latches with Tri-shaped Base and Long Slide

Part Number	Description	Material	Finish
209410	latch	steel	zinc plated
209103	keeper	steel	zinc plated
209410SS	latch	300 series stainless steel	tumbled
209103SS	keeper	304SS	tumbled



**MOUNTING DIMENSIONS**



**LATCH**

