

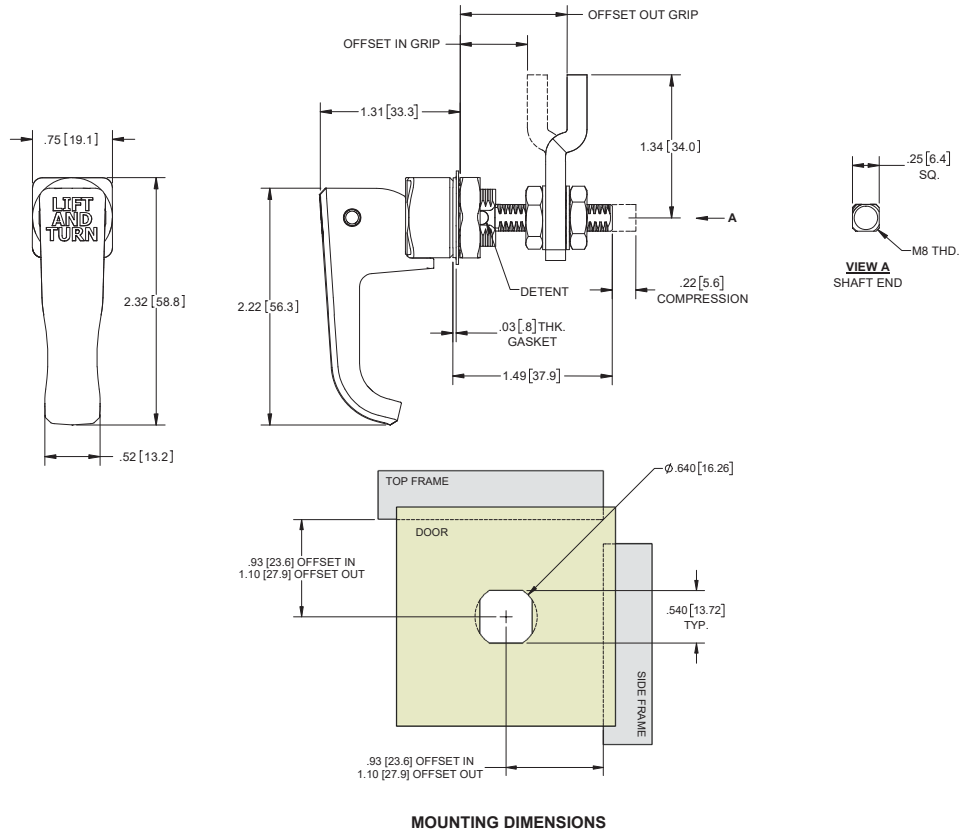
Small Pull Action Lift and Turn Compression Latches

316SS NEMA 12 IP64



Part Number	Offset In Grip		Offset Out Grip		Material	Finish
	Min.	Max.	Min.	Max.		
NEW 5-21	no cam		no cam		die cast zinc	natural with protective film
NEW 5-21BC	no cam		no cam		die cast zinc	brushed chrome
NEW 5-21BK	no cam		no cam		die cast zinc	matte black
NEW 5-21CH	no cam		no cam		die cast zinc	polished chrome
NEW 5-21SST*	no cam		no cam		316SS	passivated
5-20-12	---	---	1.660 [42.16]	2.050 [52.07]	die cast zinc	natural with protective film
5-20BC-12	---	---	1.660 [42.16]	2.050 [52.07]	die cast zinc	brushed chrome
5-20BK-12	---	---	1.660 [42.16]	2.050 [52.07]	die cast zinc	matte black
5-20CH-12	---	---	1.660 [42.16]	2.050 [52.07]	die cast zinc	polished chrome
5-20SS-12	---	---	1.660 [42.16]	2.050 [52.07]	316SS	passivated
5-20-8	.080 [2.03]	.470 [11.94]	1.260 [32.00]	1.650 [41.91]	die cast zinc	natural with protective film
5-20BC-8	.080 [2.03]	.470 [11.94]	1.260 [32.00]	1.650 [41.91]	die cast zinc	brushed chrome
5-20BK-8	.080 [2.03]	.470 [11.94]	1.260 [32.00]	1.650 [41.91]	die cast zinc	matte black
5-20CH-8	.080 [2.03]	.470 [11.94]	1.260 [32.00]	1.650 [41.91]	die cast zinc	polished chrome
5-20SS-8	.080 [2.03]	.470 [11.94]	1.260 [32.00]	1.650 [41.91]	316SS	passivated
5-20-4	.470 [11.94]	.870 [22.10]	.870 [22.10]	1.250 [31.75]	die cast zinc	natural with protective film
5-20BC-4	.470 [11.94]	.870 [22.10]	.870 [22.10]	1.250 [31.75]	die cast zinc	brushed chrome
5-20BK-4	.470 [11.94]	.870 [22.10]	.870 [22.10]	1.250 [31.75]	die cast zinc	matte black
5-20CH-4	.470 [11.94]	.870 [22.10]	.870 [22.10]	1.250 [31.75]	die cast zinc	polished chrome
5-20SS-4	.470 [11.94]	.870 [22.10]	.870 [22.10]	1.250 [31.75]	316SS	passivated

- ▶ includes:
 - ▶ (1) reversible cam
 - ▶ (1) body nut
 - ▶ (2) jam nuts
 - ▶ (2) lock washers
- ▶ gasket included for die cast zinc parts only. also sold separately as part no. 5-25G
- ▶ straight steel, zinc plated cam sold separately (part no. 5C11) see pg. 152
- ▶ * no internal sealing, suitable for high temperature applications



MOUNTING DIMENSIONS