

Flush-Mount Latches

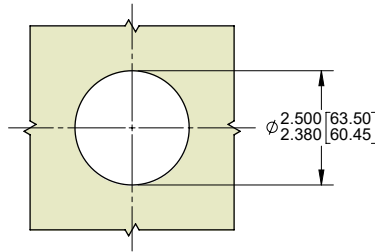


Part Number	Description	Color	Stock
1175	locking latch	black	yes
1175SS	locking latch with 304SS pull	black	yes
1176	non-locking latch	black	yes
1177	dummy latch	black	yes

- ▶ latches include:
 - ▶ thermoplastic body with UV stabilizers
 - ▶ thermoplastic body washer with UV stabilizers
 - ▶ thermoplastic body nut with UV stabilizers
 - ▶ (2) stainless steel hex nuts
 - ▶ (2) stainless steel internal tooth washers
- ▶ locking latch features stainless steel lock
- ▶ plug with dust shutter and one key per latch
- ▶ water resistant
- ▶ stainless steel shaft
- ▶ cams are sold separately, see below
- ▶ gasket available separately as part no. 117G



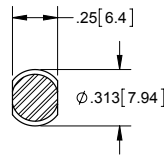
Locking Latch
part no. 1175SS



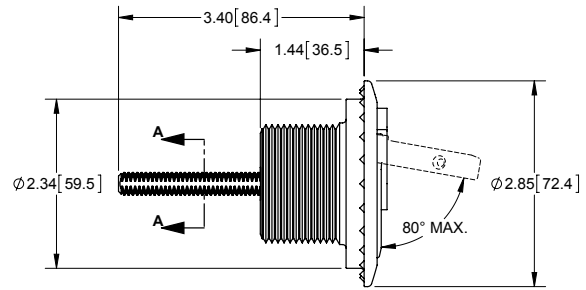
MOUNTING DIMENSIONS



Locking Latch
part no. 1175



SECTION A-A



Dummy Latch
part no. 1177
dummy series has no shaft

Flush-Mount Latches Cams

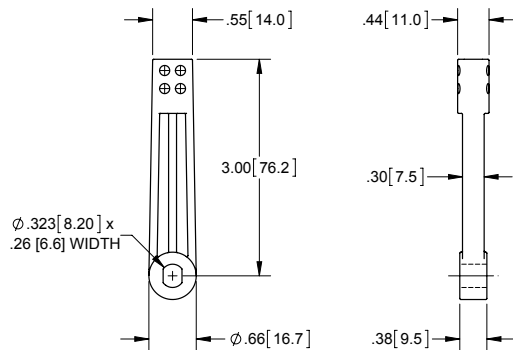
Part Number	Description	Material	Finish
D325	straight	die cast zinc	yellow zinc
D326	offset	die cast zinc	yellow zinc

▶ used with latches shown above

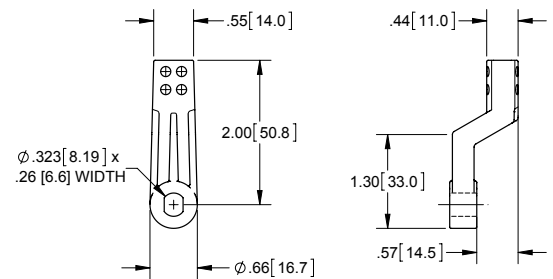


D325

D326



part number:
D325



part number:
D326