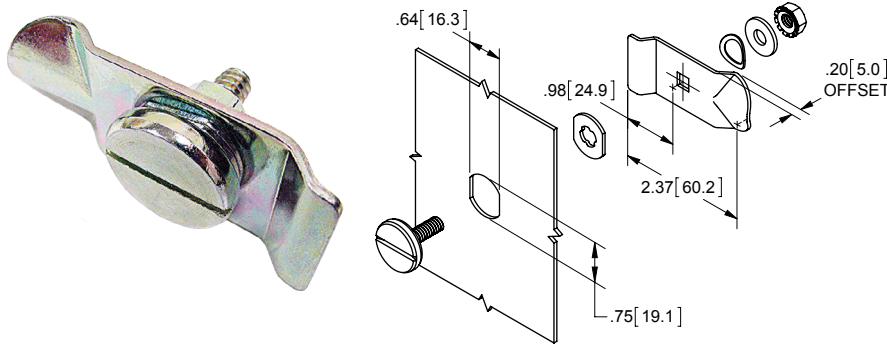


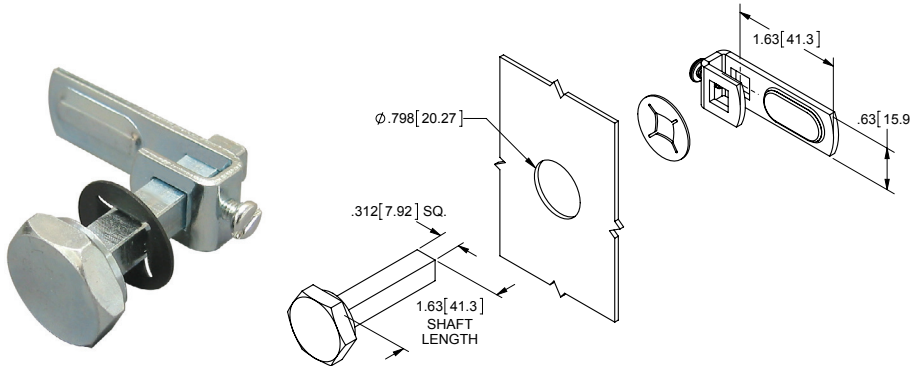
NEMA 1 Enclosure Latch



Part Number	Material	Finish
15	steel	yellow zinc plated

- ▶ same double D cut-out as most cam locks
- ▶ flush or recessed mounting
- ▶ spring and flat washer are clear zinc plated
- ▶ operated by screwdriver or coin
- ▶ shipped assembled

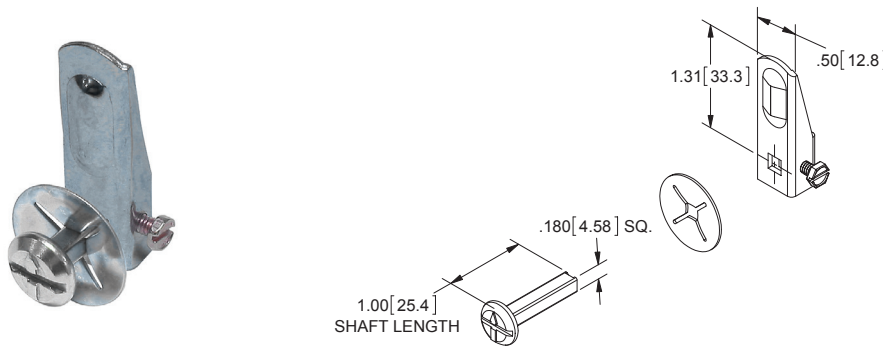
Hex Turn Latch



Part Number	Material	Finish
17	steel	zinc plated

- ▶ includes:
 - ▶ hex bolt latch retainer, zinc plated
 - ▶ push-on nut, black oxide
 - ▶ reverse style single point cam, zinc plated

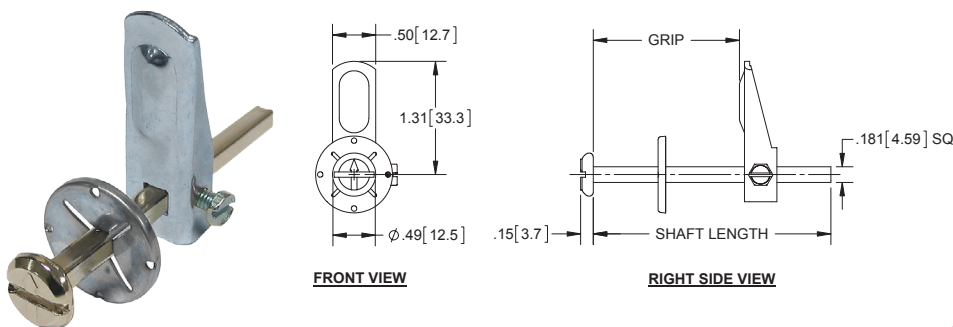
Stainless Steel 1.00" Screwdriver Turn Latch



Part Number	Material	Finish
10SS	304SS	tumbled

- ▶ includes:
 - ▶ slotted 304SS bolt with arrow pointer
 - ▶ steel push-on nut, clear zinc plated
 - ▶ single point steel cam, zinc plated

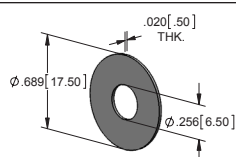
Steel Screwdriver Turn Latches



Part Number	Shaft Length	Max. Grip
10ZN	1.00 [25.4]	0.50 [12.7]
10ZN-01	2.75 [69.9]	2.25 [57.2]
10ZN-03	1.25 [31.8]	0.75 [19.1]
10ZN-04	1.50 [38.1]	1.00 [25.4]
10ZN-05	1.75 [44.5]	1.25 [31.8]
10ZN-06	2.00 [50.8]	1.50 [38.1]
10ZN-07	2.25 [57.2]	1.75 [44.5]
NEW 10ZN-08	3.25 [82.6]	2.75 [69.9]

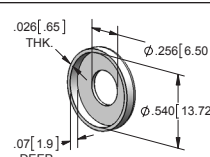
Flat Washer

- part no. 363
- ▶ material: steel
 - ▶ finish: zinc plated



Cup Washer

- part no. 363N
- ▶ material: plastic
 - ▶ finish: white



- ▶ material: steel
- ▶ bolt finish: bright nickel plated
- ▶ includes:
 - ▶ slotted bolt with arrow pointer
 - ▶ steel push-on nut, clear zinc plated
 - ▶ single point steel cam, zinc plated