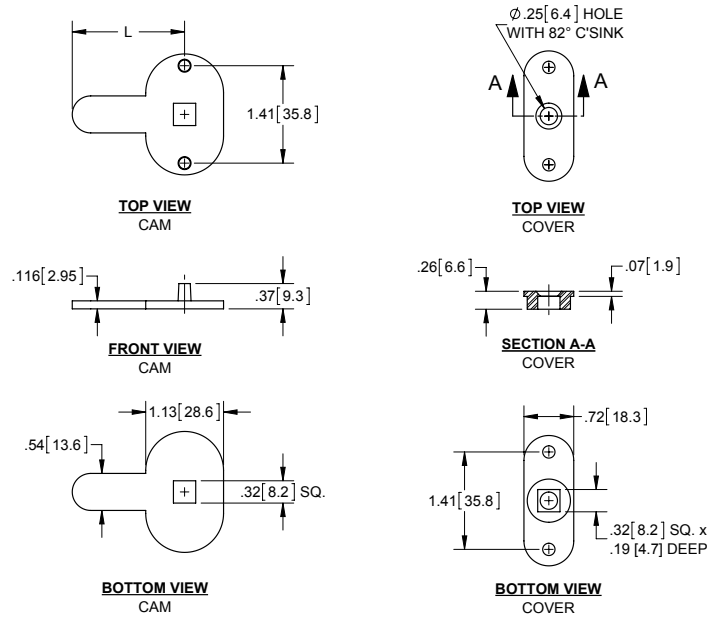


### Three Point Cam Kit

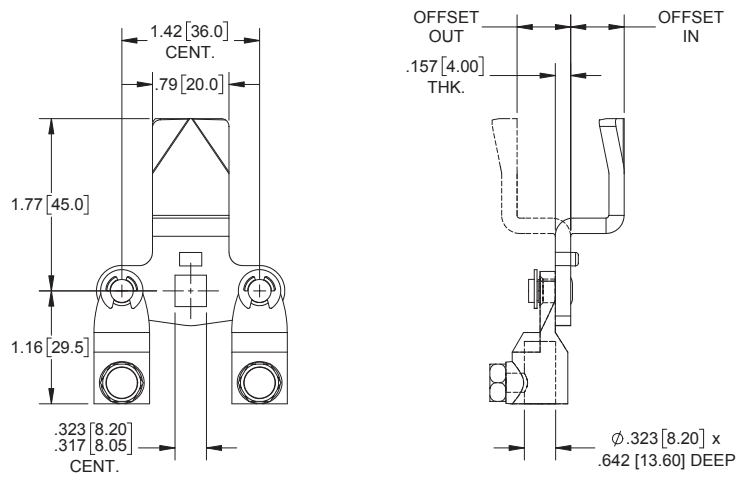
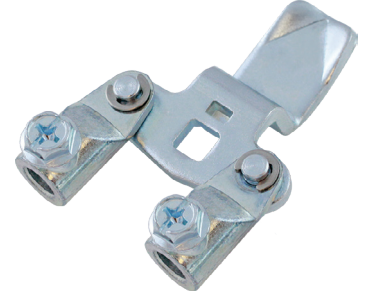
Part Number	L
<b>C11</b>	1.625 [41.28]
<b>C12</b>	2.125 [53.98]

- ▶ for .313" sq. shaft
- ▶ die cast zinc with mill finish
- ▶ use with 723 rods (see pg. 63)
- ▶ cam and cover kits are shipped separately in bulk



### Three Point Offset Cams

Grip *	Part Number	Offset	Body Length	Dimension to Add for Correct Grip
.059 [1.50]	<b>12C61</b>	.63 [16.0] in	.69 [17.5]	same as grips on cam table
.138 [3.50]	<b>12C60</b>	.55 [14.0] in	.71 [18.0]	add .02 [50] to grips on cam table
.217 [5.50]	<b>12C59</b>	.47 [12.0] in	.75 [19.1]	add .06 [1.60] to grips on cam table
.295 [7.50]	<b>12C58</b>	.39 [10.0] in	.88 [22.4]	add .19 [4.90] to grips on cam table
.374 [9.50]	<b>12C57</b>	.31 [8.0] in	1.18 [30.0]	add .49 [12.50] to grips on cam table
.413 [10.50]	<b>12C56</b>	.28 [7.0] in	1.97 [50.0]	add 1.28 [32.50] to grips on cam table
.453 [11.50]	<b>12C55</b>	.24 [6.0] in		
.531 [13.50]	<b>12C54</b>	.16 [4.0] in		
.610 [2.00]	<b>12C53</b>	.08 [2.0] in		
straight	<b>12C52</b>	straight		
.768 [19.50]	<b>12C62</b>	.08 [2.0] out		
.846 [21.50]	<b>12C63</b>	.16 [4.0] out		
.925 [23.50]	<b>12C64</b>	.24 [6.0] out		
.965 [24.50]	<b>12C65</b>	.28 [7.0] out		
1.000 [25.50]	<b>12C66</b>	.31 [8.0] out		
1.083 [27.50]	<b>12C67</b>	.39 [10.0] out		
1.161 [29.50]	<b>12C68</b>	.47 [12.0] out		
1.240 [31.50]	<b>12C69</b>	.55 [14.0] out		
1.319 [33.50]	<b>12C70</b>	.63 [16.0] out		
1.358 [34.50]	<b>12C71</b>	.67 [17.0] out		
1.398 [35.50]	<b>12C72</b>	.71 [18.0] out		
1.476 [37.50]	<b>12C73</b>	.79 [20.0] out		
1.555 [39.50]	<b>12C74</b>	.87 [22.0] out		



- ▶ steel cam with die cast zinc rod adapter and e-clips
- ▶ finish: zinc plated
- ▶ rod adaptor can be purchased separately, p/n **C20**
- ▶ \* grips shown are for latches with .69 [17.5] body length on pages 110 - 113 (see body length table to the right for other latch body lengths)