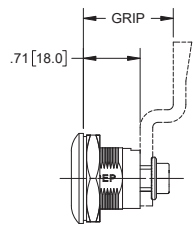
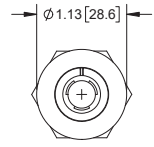
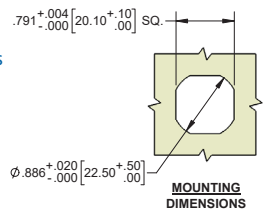




### Tubular Quarter-turn Latch

Part Number	Description	Material	Finish	Key Part No.
41-18BK	tubular	die cast zinc	matte black powder coated	3-13K

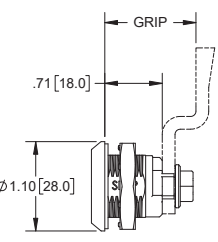
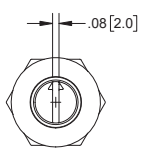
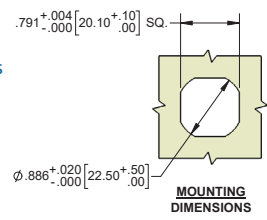
- ▶ assembly includes: body nut, cam retaining screw, and seals: (1) internal o-ring and a face gasket
- ▶ cams sold separately.  
See pg. 128 for cams & grip dimension
- ▶ tubular plug for higher security
- ▶ intended for NEMA type 4 & 12 enclosures



### Coin-proof Slotted Quarter-turn Latch

Part Number	Description	Material	Finish	Key Part No.
41-01BK	coin-proof slot	die cast zinc	textured black	no key

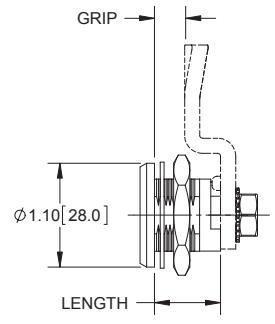
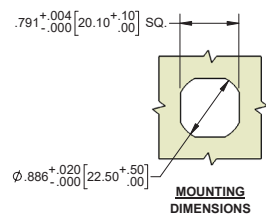
- ▶ coin-proof slotted plug for higher security assembly includes: body nut, cam retaining screw, and seals: (1) internal o-ring and a face gasket
- ▶ cams sold separately.  
See pg. 128 for cams & grip dimension
- ▶ intended for NEMA type 4 & 12 enclosures



### Quarter-turn Latches

#### Features

- ▶ intended for NEMA type 4, 4X & 12 enclosures
- ▶ assembly includes:
  - ▶ body nut
  - ▶ cam retaining screw
  - ▶ disc washer
  - ▶ face gasket
  - ▶ internal o-ring
- ▶ cams sold separately. See pg. 128 for cams & grip dimension
- ▶ \* keys sold separately. See table for key part numbers
- ▶ latches below may use the Plastic Cover (part no. KH55BK-10) on pg. 118



### Quarter-turn Latches with Slotted Plugs

Part Number	Length	Material		Finish		Key Part No.
		Housing	Plug	Housing	Plug	
12	.709 [18.00]	die cast zinc	die cast zinc	chrome plated	chrome plated	no key
12BK	.709 [18.00]	die cast zinc	die cast zinc	black e-coat	black e-coat	no key
12PBK	.709 [18.00]	plastic	die cast zinc	black	chrome	no key
12SS	.709 [18.00]	304SS	304SS	machine polished	machine polished	no key
12SST	.709 [18.00]	316SS	316SS	machine polished	machine polished	no key
12SST-50*	.709 [18.00]	316SS	316SS	machine polished	machine polished	no key

- ▶ \* part no. 12SST-50 has compression spring instead of disc washer



### Quarter-turn Latches with Square Plugs

Part Number	Length	Material	Finish	Square Plug Size	Face With Arrow	Key Part No.
14	.689 [17.50]	die cast zinc	chrome plated	7mm	no	4-16K
14-50*	.709 [18.00]	die cast zinc	chrome plated	7mm	no	4-16K
14BK-50*	.709 [18.00]	die cast zinc	black, smooth	7mm	no	4-16K
14-01	.709 [18.00]	die cast zinc	chrome plated	8mm	yes	4-19K01
14BK-01	.709 [18.00]	die cast zinc	black	8mm	yes	4-19K

- ▶ \* part numbers 14-50 & 14BK-50 have compression spring instead of disc washer



7mm no arrow



8mm with arrow