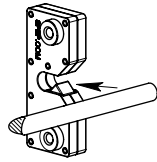


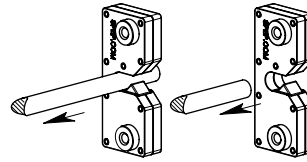
### Slam Action Strikes

Part No.	Material	Finish	Studs
<b>L800</b>	die cast zinc	yellow zinc	yes
<b>L801</b>	die cast zinc	yellow zinc	no

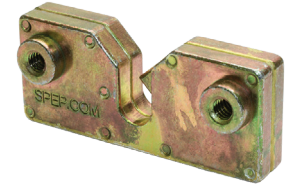
▶ fits rod of up to  $\varnothing 3/8"$ ; see pages 63 and 135 for 8mm rods & 228 for 9mm rods



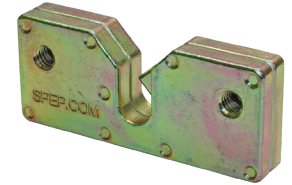
ROD IS SLAMMED INTO LATCH TO ENGAGE



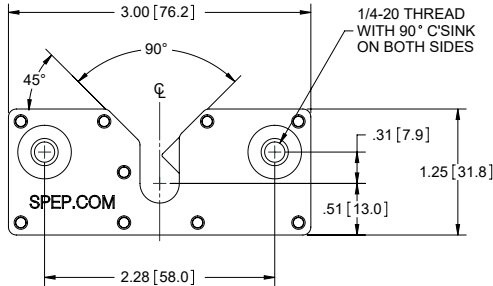
ROD SLIDES OUT OF LATCH WHEN HANDLE IS TURNED TO DISENGAGE



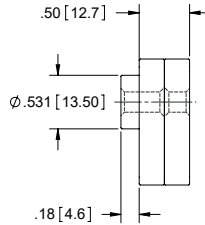
with studs



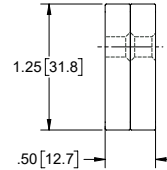
without studs



FRONT VIEW



RIGHT SIDE VIEW WITH STUDS

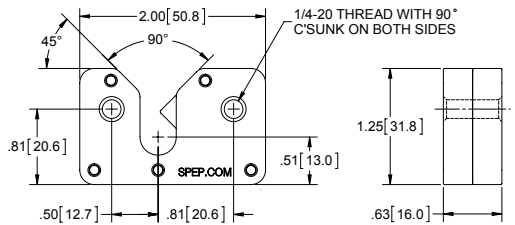


RIGHT SIDE VIEW WITHOUT STUDS

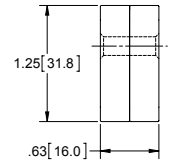
### Slam Action Strike

Part No.	Material	Finish
<b>L803</b>	die cast zinc	yellow zinc

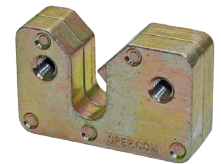
▶ fits rod of up to  $\varnothing 3/8"$ ; see pages 63 and 135 for 8mm rods & 228 for 9mm rods



FRONT VIEW



RIGHT SIDE VIEW

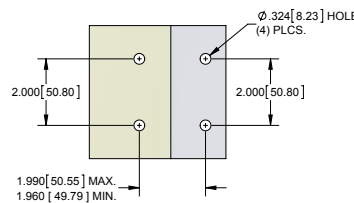


### Small Explosion Venting Latch

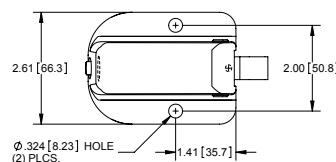
Part Number	Material	Finish
<b>174</b>	cast iron housing	zinc plated

▶ slotted screw on back for latch tension adjustment  
▶ adjustable release force: 10 - 45 lbs.

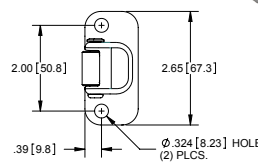
See our industrial pulls on pages 23 & 24.



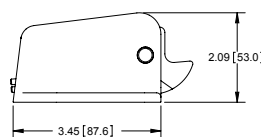
MOUNTING DIMENSIONS



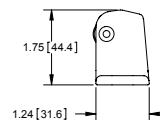
TOP VIEW



TOP VIEW



FRONT VIEW



FRONT VIEW

